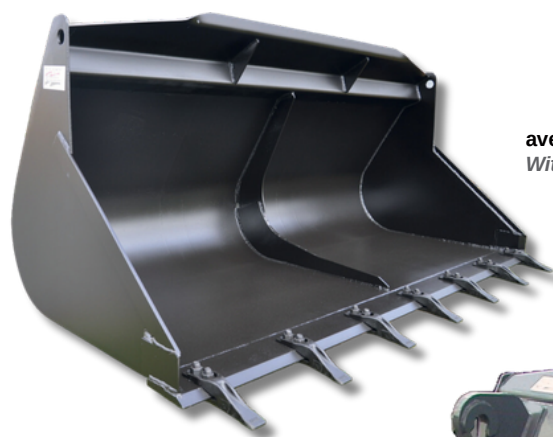


BT

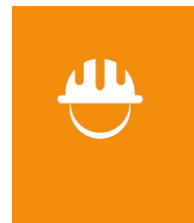
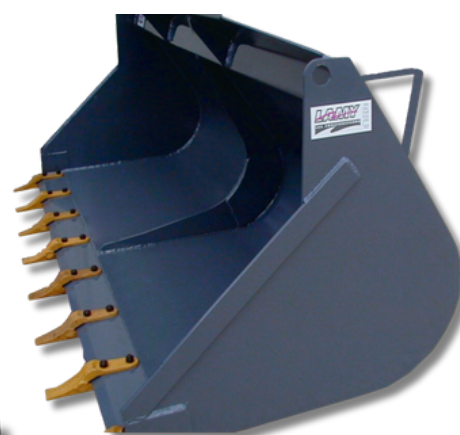
BENNE TERRASSEMENT

Excavating bucket

Gamme renforcée
Reinforced range



avec dents
With teeth



CARACTERISTIQUES / CHARACTERISTICS :




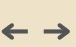




- Largeur : de 1,50m à 2,50m
- Contenance : de 500 L à 1500 L
- Lame d'attaque 150x20mm, 250HB avec dents boulonnées ou contre-lame
- Cerclage axial extérieur, nervure centrale intérieure
- Rehausse supérieure rapportée, renforcée sur toute la largeur
- Joutes latérales avec renforts sur flancs
- Avec dents boulonnées (ou contre-lame boulonnée)
- *Width: from 1,50m to 2,50m*
- *Capacity: from 500 L to 1500 L*
- *Toe plate 150x20mm, bolted teeth*
- *External axial strapping, internal central rib*
- *Top extension attached, reinforced over the entire width*
- *Side plates with reinforced sidewalls*
- *With bolted teeth (or bolted counter plate)*

OPTIONS :

- Porte-dents soudés
- Contre-lame réversible 150x20
- Joutes droites
- Supplément pour accrochages sur axes
- *Welded tooth holder*
- *Reversible counter plate 150x20*
- *Straight side plates*
- *Supplement for pin on connection*

Modèle :

← → de 1.50m à 2.50m
 de 500L à 1500L

								
BT 18/06	974mm	954mm	1.80m	849mm	690 L	860 L	360kg	
BT 20/08	974mm	954mm	2.00m	849mm	760 L	960 L	390kg	
BT 22/10	1073mm	1014mm	2.20m	969mm	1000 L	1200 L	450kg	
BT 23/08	974mm	954mm	2.30m	849mm	880 L	1120 L	440kg	
BT 23/15	1170mm	1089mm	2.30m	1059mm	1250 L	1570 L	500kg	
BT 24.5/10	1073mm	1014mm	2.45m	969mm	1100 L	1400 L	590kg	
BT 25/15	1170mm	1089mm	2.50m	1059mm	1360 L	1700 L	540kg	

Poids approximatifs sans accrochage - photos non contractuelles / Approximate weight without hitch-non-contractual photos